

Gwynedd Friends 2nd Saturday Coffeehouse



Gwynedd Friends Meeting
1101 DeKalb Pike, Gwynedd, PA 19454
US Route 202 and Sumneytown Pike

\$7 donation suggested to cover costs and
support the Charity of the Evening

Doors open at 7:30 PM, show starts at
8:00 PM

COVID-19 RESTRICTIONS

*At this time, Covid-19
restrictions for these events
include proof of full Covid-19
vaccination with photo ID.
Masks must be worn indoors at
all times and refreshments will
not be served. Check this website
below for any updates to the
restrictions closer to the time of
performances.*

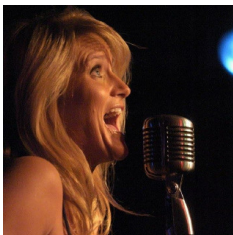
<http://www.gwyneddmeeing.org/Coffeehouse.html>

Programs for 2022

Saturday, March 12, 2022

MELISSA MARTIN and the MIGHTY RHYTHM KINGS

Melissa Martin is a leading Philly Blues and Swing vocalist. Melissa's irresistible voice and simmering performances make her equally adept at Rockin' Jump Blues, Drivin' R&B, and Jazz Torch ballads. Melissa Martin and the Mighty Rhythm Kings lay it down and thrill



the crowds from the first downbeat to the final encore. This band's high energy guarantees you a great time. We dare you to sit still!

[Melissa's Facebook Page](#)

Saturday, April 9, 2022

CHUCK van ZYL



Chuck van Zyl is well known as host of STAR'S END (WXPN's renowned radio program of Spacemusic dreamscapes) and coordinator of THE GATHERINGS (Philadelphia's premiere concert series of innovative music) and has also been making his own unique style of Electronic Ambient Music since 1983. His work evokes the sense of discovery first heard in music by Jean-Michel Jarre, Kraftwerk, Vangelis, and Tangerine Dream.

"The conventional musician tries to transcend an instrument...the ambient musician tries to transcend a system.... Ambient music creates a space then fills it up," says Chuck. Composed spontaneously, the musical textures transport the audience and artist to an otherworldly experience of presence, absence, beauty, and mystery.

Through deep space gateways and brilliant sequencer breakdowns, from the heights of improvisation on down to quietly consuming dark fields, Chuck van Zyl manipulates timbre (the very character of sound) into musical expressions, culminating in an epic intimacy with those gathered. The experience is enhanced with a light show also

created spontaneously by Chuck as he accents his musical expressions.

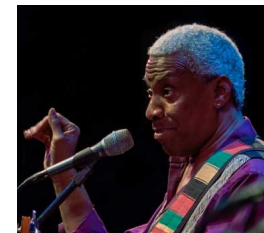
Please come for the journey to the outer reaches of body, space, and mind in the intimacy of Gwynedd Friends Coffeehouse.

<http://chuckvanzyl.weebly.com>

FIRST Saturday, May 7, 2022

REGGIE HARRIS

Reggie Harris is a singer-songwriter and storyteller, and a song-leader who is known the world over as a powerful interpreter of the global narrative of music.



A passionate, engaging, and inspirational entertainer and concert artist, Reggie is recognized for focusing new energy on the important role of music in the discourse for inclusion and the struggle for human rights while using the lessons of history as a base. As an expert on the music of the Underground Railroad and the Modern Civil Rights Movement, he is at home on stage whether he is performing, lecturing, or leading discussions in seminars or in the classroom.

<https://reggieharrismusic.com/>

*Extra donations to our **Charity of the Evening** can be made in specially marked boxes at the venue. In the past, these donations have benefited local food and housing projects, disaster relief, and international programs boosting education and self-sufficiency in impoverished areas.*

Gwynedd Friends
2nd Saturday **Coffeehouse**



Gwynedd Friends Meeting
1101 DeKalb Pike
North Wales, PA 19454

Gwynedd Friends Coffeehouse

PURPOSE - The purpose of this outreach project is to provide high quality entertainment at a price (\$7) that is accessible to people in our greater community.

STRUCTURE - Each season we present five coffeehouses with varied entertainment. In general, the types of music programs we have are:

- Singer/Songwriter or Solo performer
- American roots music (e.g. old time country music, bluegrass, blues, Cajun)
- Jazz
- Music from other countries or cultures (e.g. South American, Celtic, Eastern European)
- Classical
- Contemporary Themes

WHO BENEFITS - Some money we receive goes to pay the performers and the rest goes to the Charity of the Evening and to pay our expenses (posters, mailings, food purchases, piano tuning, etc). At the end of our season, Gwynedd Friends Coffeehouse has no net profits.

DO YOU WANT TO BE A COFFEEHOUSE VOLUNTEER?

Our volunteers come from two groups:

- 1) the members and attenders at Gwynedd Friends Meeting
- 2) people not associated with Gwynedd Friends Meeting who wish to help out the set up and running of the Coffeehouse.

Contact Carl Baron at 215-699-7835 or through the Coffeehouse web site
<<http://www.gwyneddmeeting.org/Coffeehouse.html>>.